

Acta Crystallographica Section E

## Structure Reports

Online

ISSN 1600-5368

**(E)-2-[(5-Bromo-2-hydroxybenzylidene)-amino]benzonitrile**

Jian-Cheng Zhou,\* Nai-Xu Li, Chuan-Ming Zhang and Zheng-Yun Zhang

College of Chemistry and Chemical Engineering, Southeast University, Nanjing 211189, People's Republic of China

Correspondence e-mail: jczhou@seu.edu.cn

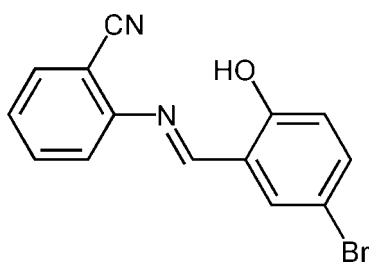
Received 15 July 2009; accepted 16 July 2009

Key indicators: single-crystal X-ray study;  $T = 294$  K; mean  $\sigma(\text{C}-\text{C}) = 0.006$  Å;  $R$  factor = 0.039;  $wR$  factor = 0.090; data-to-parameter ratio = 17.0.

In the molecule of the title compound,  $\text{C}_{14}\text{H}_9\text{BrN}_2\text{O}$ , the dihedral angle between the aromatic rings is  $1.09(4)^\circ$ . Intramolecular  $\text{O}-\text{H}\cdots\text{N}$  hydrogen bonding results in the formation of a planar (r.m.s. deviation =  $0.0140$  Å) six-membered ring. In the crystal structure, intermolecular  $\text{C}-\text{H}\cdots\text{N}$  interactions link the molecules into chains.

## Related literature

For general background to Schiff base compounds in coordination chemistry, see: Chen *et al.* (2008); May *et al.* (2004); Weber *et al.* (2007). For a related structure, see: Elmalh *et al.* (1999). For bond-length data, see: Allen *et al.* (1987).



## Experimental

## Crystal data

 $\text{C}_{14}\text{H}_9\text{BrN}_2\text{O}$   
 $M_r = 301.14$ 

 Orthorhombic,  $Pca2_1$   
 $a = 25.609(8)$  Å

 $b = 3.9299(12)$  Å  
 $c = 12.368(4)$  Å  
 $V = 1244.7(7)$  Å<sup>3</sup>  
 $Z = 4$ 

 Mo  $K\alpha$  radiation  
 $\mu = 3.29$  mm<sup>-1</sup>  
 $T = 294$  K  
 $0.2 \times 0.2 \times 0.2$  mm

## Data collection

 Bruker SMART CCD area-detector diffractometer  
 Absorption correction: multi-scan (SADABS; Bruker, 2000)  
 $T_{\min} = 0.518$ ,  $T_{\max} = 0.518$ 

 9720 measured reflections  
 2771 independent reflections  
 1737 reflections with  $I > 2\sigma(I)$   
 $R_{\text{int}} = 0.048$ 

## Refinement

 $R[F^2 > 2\sigma(F^2)] = 0.039$   
 $wR(F^2) = 0.090$   
 $S = 1.01$   
 2771 reflections  
 163 parameters  
 1 restraint

 H-atom parameters constrained  
 $\Delta\rho_{\max} = 0.23$  e Å<sup>-3</sup>  
 $\Delta\rho_{\min} = -0.29$  e Å<sup>-3</sup>  
 Absolute structure: Flack (1983),  
 1271 Friedel pairs  
 Flack parameter: 0.039 (14)

Table 1

Hydrogen-bond geometry (Å, °).

$D-H\cdots A$	$D-H$	$H\cdots A$	$D\cdots A$	$D-H\cdots A$
$\text{O1}-\text{H1A}\cdots\text{N1}$	0.82	1.93	2.651 (4)	146
$\text{C7}-\text{H7A}\cdots\text{N2}^i$	0.93	2.44	3.326 (4)	160

Symmetry code: (i)  $-x + \frac{1}{2}, y + 1, z + \frac{1}{2}$ 

Data collection: SMART (Bruker, 2000); cell refinement: SAINT (Bruker, 2000); data reduction: SAINT; program(s) used to solve structure: SHELXS97 (Sheldrick, 2008); program(s) used to refine structure: SHELXL97 (Sheldrick, 2008); molecular graphics: ORTEP-3 for Windows (Farrugia, 1997) and PLATON (Spek, 2009); software used to prepare material for publication: SHELXL97.

Supplementary data and figures for this paper are available from the IUCr electronic archives (Reference: HK2739).

## References

- Allen, F. H., Kennard, O., Watson, D. G., Brammer, L., Orpen, A. G. & Taylor, R. (1987). *J. Chem. Soc. Perkin Trans. 2*, pp. S1–19.
- Bruker (2000). SMART, SAINT and SADABS. Bruker AXS Inc., Madison, Wisconsin, USA.
- Chen, Z. H., Morimoto, H., Matsunaga, S. & Shibasaki, M. (2008). *J. Am. Chem. Soc.* **130**, 2170–2171.
- Elmalh, A., Kabak, M. & Elerman, Y. (1999). *J. Mol. Struct.* **484**, 229–234.
- Farrugia, L. J. (1997). *J. Appl. Cryst.* **30**, 565.
- Flack, H. D. (1983). *Acta Cryst.* **A39**, 876–881.
- May, J. P., Ting, R., Lermer, L., Thomas, J. M., Roupioz, Y. & Perrin, D. M. (2004). *J. Am. Chem. Soc.* **126**, 4145–4156.
- Sheldrick, G. M. (2008). *Acta Cryst.* **A64**, 112–122.
- Spek, A. L. (2009). *Acta Cryst.* **D65**, 148–155.
- Weber, B., Tandon, R. & Himsl, D. (2007). *Z. Anorg. Allg. Chem.* **633**, 1159–1162.

**supplementary materials**

*Acta Cryst.* (2009). E65, o1949 [ doi:10.1107/S1600536809027950 ]

## (E)-2-[(5-Bromo-2-hydroxybenzylidene)amino]benzonitrile

J.-C. Zhou, N.-X. Li, C.-M. Zhang and Z.-Y. Zhang

### Comment

Schiff base compounds have received considerable attention for many years, primarily due to their importance in the development of coordination chemistry related to magnetism (Weber *et al.*, 2007), catalysis (Chen *et al.*, 2008) and biological process (May *et al.*, 2004). We report herein the synthesis and crystal structure of the title compound.

In the molecule of the title compound (Fig. 1), the bond lengths (Allen *et al.*, 1987) and angles are within normal ranges and comparable with the corresponding values in a similar compound (Elmalı *et al.*, 1999). Rings A (C1-C6) and B (C8-C13) are, of course, planar, and they are oriented at a dihedral angle of A/B = 1.09 (4)°. Intramolecular O-H...N hydrogen bond (Table 1) results in the formation of planar six-membered ring C (O1/N1/C1/C2/C7/H1A), it is oriented with respect to rings A and B at dihedral angles of A/C = 2.00 (4) and B/C = 1.42 (4)°. So, rings A, B and C are almost coplanar.

In the crystal structure, intermolecular C-H...N interactions link the molecules into chains (Fig. 2), in which they may be effective in the stabilization of the structure.

### Experimental

For the preparation of the title compound, 2-aminobenzonitrile (0.472 g, 4 mmol) and 5-bromo-2-hydroxybenzaldehyde (0.8 g, 4 mmol) were dissolved in ethanol (20 ml). The mixture was heated to reflux for 5 h, and then cooled to room temperature. The solution was filtered and after two weeks yellow crystals suitable for X-ray analysis were obtained.

### Refinement

H atoms were positioned geometrically with O-H = 0.82 Å (for OH) and C-H = 0.93 Å for aromatic H atoms, respectively and constrained to ride on their parent atoms, with  $U_{\text{iso}}(\text{H}) = xU_{\text{eq}}(\text{C}, \text{O})$ , where  $x = 1.5$  for OH H and  $x = 1.2$  for aromatic H atoms.

### Figures

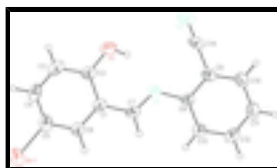


Fig. 1. The molecular structure of the title molecule, with the atom-numbering scheme. Hydrogen bond is shown as dashed line.

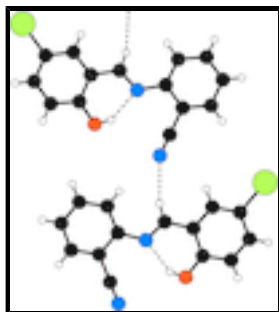


Fig. 2. A partial packing diagram of the title compound. Hydrogen bonds are shown as dashed lines.

**(E)-2-[(5-Bromo-2-hydroxybenzylidene)amino]benzonitrile**

*Crystal data*

$C_{14}H_9BrN_2O$	$F_{000} = 600$
$M_r = 301.14$	$D_x = 1.607 \text{ Mg m}^{-3}$
Orthorhombic, $Pca2_1$	Mo $K\alpha$ radiation, $\lambda = 0.71073 \text{ \AA}$
Hall symbol: P 2c -2ac	Cell parameters from 1688 reflections
$a = 25.609 (8) \text{ \AA}$	$\theta = 3.1\text{--}27.7^\circ$
$b = 3.9299 (12) \text{ \AA}$	$\mu = 3.29 \text{ mm}^{-1}$
$c = 12.368 (4) \text{ \AA}$	$T = 294 \text{ K}$
$V = 1244.7 (7) \text{ \AA}^3$	Prism, yellow
$Z = 4$	$0.2 \times 0.2 \times 0.2 \text{ mm}$

*Data collection*

Bruker SMART CCD area-detector diffractometer	2771 independent reflections
Radiation source: fine-focus sealed tube	1737 reflections with $I > 2\sigma(I)$
Monochromator: graphite	$R_{\text{int}} = 0.048$
Detector resolution: $13.6612 \text{ pixels mm}^{-1}$	$\theta_{\text{max}} = 27.6^\circ$
$T = 294 \text{ K}$	$\theta_{\text{min}} = 1.6^\circ$
$\varphi$ and $\omega$ scans	$h = -33 \rightarrow 33$
Absorption correction: multi-scan (SADABS; Bruker, 2000)	$k = -5 \rightarrow 5$
$T_{\text{min}} = 0.518$ , $T_{\text{max}} = 0.518$	$l = -16 \rightarrow 14$
9720 measured reflections	

*Refinement*

Refinement on $F^2$	Hydrogen site location: inferred from neighbouring sites
Least-squares matrix: full	H-atom parameters constrained
$R[F^2 > 2\sigma(F^2)] = 0.039$	$w = 1/[\sigma^2(F_o^2) + (0.0283P)^2 + 0.0106P]$
$wR(F^2) = 0.090$	where $P = (F_o^2 + 2F_c^2)/3$
$S = 1.01$	$(\Delta/\sigma)_{\text{max}} < 0.001$
	$\Delta\rho_{\text{max}} = 0.23 \text{ e \AA}^{-3}$

2771 reflections	$\Delta\rho_{\min} = -0.29 \text{ e \AA}^{-3}$
163 parameters	Extinction correction: none
1 restraint	Absolute structure: Flack (1983), 1271 Friedel pairs
Primary atom site location: structure-invariant direct methods	Flack parameter: 0.039 (14)
Secondary atom site location: difference Fourier map	

*Special details*

**Geometry.** All e.s.d.'s (except the e.s.d. in the dihedral angle between two l.s. planes) are estimated using the full covariance matrix. The cell e.s.d.'s are taken into account individually in the estimation of e.s.d.'s in distances, angles and torsion angles; correlations between e.s.d.'s in cell parameters are only used when they are defined by crystal symmetry. An approximate (isotropic) treatment of cell e.s.d.'s is used for estimating e.s.d.'s involving l.s. planes.

**Refinement.** Refinement of  $F^2$  against ALL reflections. The weighted  $R$ -factor  $wR$  and goodness of fit  $S$  are based on  $F^2$ , conventional  $R$ -factors  $R$  are based on  $F$ , with  $F$  set to zero for negative  $F^2$ . The threshold expression of  $F^2 > \sigma(F^2)$  is used only for calculating  $R$ -factors(gt) *etc.* and is not relevant to the choice of reflections for refinement.  $R$ -factors based on  $F^2$  are statistically about twice as large as those based on  $F$ , and  $R$ -factors based on ALL data will be even larger.

*Fractional atomic coordinates and isotropic or equivalent isotropic displacement parameters ( $\text{\AA}^2$ )*

	$x$	$y$	$z$	$U_{\text{iso}}^*/U_{\text{eq}}$
Br1	0.014802 (15)	0.46800 (11)	0.49637 (9)	0.0816 (2)
O1	0.15855 (14)	-0.0121 (8)	0.1439 (2)	0.0767 (9)
H1A	0.1892	0.0184	0.1605	0.115*
N1	0.23690 (11)	0.1858 (9)	0.2691 (3)	0.0471 (7)
N2	0.28448 (17)	-0.1697 (11)	0.0417 (3)	0.0800 (12)
C1	0.14763 (14)	0.2551 (10)	0.3176 (3)	0.0481 (9)
C2	0.12781 (19)	0.1038 (11)	0.2221 (4)	0.0567 (12)
C3	0.0737 (2)	0.0789 (11)	0.2121 (4)	0.0723 (13)
H3A	0.0598	-0.0122	0.1490	0.087*
C4	0.04062 (17)	0.1828 (11)	0.2912 (4)	0.0679 (12)
H4A	0.0047	0.1582	0.2825	0.081*
C5	0.06036 (14)	0.3244 (10)	0.3842 (4)	0.0576 (10)
C6	0.11302 (15)	0.3625 (11)	0.3970 (3)	0.0543 (10)
H6A	0.1259	0.4619	0.4598	0.065*
C7	0.20246 (14)	0.2971 (10)	0.3346 (3)	0.0488 (9)
H7A	0.2135	0.4110	0.3964	0.059*
C8	0.29066 (13)	0.2276 (9)	0.2900 (3)	0.0458 (9)
C9	0.32433 (17)	0.1123 (10)	0.2105 (3)	0.0523 (10)
C10	0.37810 (18)	0.1385 (12)	0.2213 (4)	0.0622 (12)
H10A	0.4001	0.0623	0.1666	0.075*
C11	0.39839 (16)	0.2791 (13)	0.3143 (4)	0.0735 (13)
H11A	0.4344	0.2974	0.3227	0.088*
C12	0.36610 (17)	0.3907 (12)	0.3933 (4)	0.0661 (12)
H12A	0.3802	0.4864	0.4556	0.079*
C13	0.31227 (16)	0.3646 (12)	0.3830 (4)	0.0613 (11)
H13A	0.2907	0.4392	0.4386	0.074*
C14	0.30179 (18)	-0.0458 (12)	0.1155 (4)	0.0598 (11)

## supplementary materials

---

### Atomic displacement parameters ( $\text{\AA}^2$ )

	$U^{11}$	$U^{22}$	$U^{33}$	$U^{12}$	$U^{13}$	$U^{23}$
Br1	0.0607 (2)	0.0846 (3)	0.0995 (4)	0.0101 (2)	0.0174 (3)	0.0112 (4)
O1	0.086 (2)	0.096 (3)	0.0480 (19)	-0.0127 (17)	-0.0052 (17)	-0.0184 (16)
N1	0.0530 (19)	0.054 (2)	0.0344 (18)	-0.0040 (14)	0.0005 (15)	-0.0044 (16)
N2	0.106 (3)	0.081 (3)	0.054 (3)	0.002 (2)	0.007 (2)	-0.024 (2)
C1	0.055 (2)	0.044 (2)	0.045 (2)	-0.0054 (19)	-0.005 (2)	0.0047 (19)
C2	0.073 (3)	0.050 (3)	0.047 (3)	-0.009 (2)	-0.004 (3)	-0.005 (2)
C3	0.075 (3)	0.076 (3)	0.067 (3)	-0.015 (3)	-0.024 (3)	0.004 (3)
C4	0.052 (2)	0.060 (3)	0.091 (4)	-0.010 (2)	-0.015 (3)	0.009 (3)
C5	0.049 (2)	0.048 (2)	0.076 (3)	0.0014 (18)	-0.001 (2)	0.016 (2)
C6	0.056 (2)	0.056 (3)	0.052 (3)	-0.0010 (19)	-0.003 (2)	-0.006 (2)
C7	0.059 (2)	0.049 (2)	0.038 (2)	-0.0061 (18)	-0.006 (2)	-0.002 (2)
C8	0.057 (2)	0.042 (2)	0.038 (2)	-0.0070 (17)	0.000 (2)	0.0003 (19)
C9	0.066 (3)	0.046 (2)	0.045 (3)	0.0001 (19)	0.005 (2)	0.004 (2)
C10	0.062 (3)	0.061 (3)	0.064 (3)	0.000 (2)	0.012 (3)	-0.003 (3)
C11	0.054 (2)	0.077 (3)	0.089 (4)	-0.003 (2)	0.010 (3)	0.000 (3)
C12	0.065 (3)	0.069 (3)	0.064 (3)	-0.009 (2)	-0.018 (2)	-0.008 (2)
C13	0.057 (2)	0.076 (3)	0.051 (3)	-0.006 (2)	0.001 (2)	-0.009 (2)
C14	0.076 (3)	0.059 (3)	0.045 (3)	0.005 (2)	0.014 (2)	-0.007 (2)

### Geometric parameters ( $\text{\AA}$ , $^\circ$ )

Br1—C5	1.898 (4)	C7—C1	1.429 (5)
O1—C2	1.328 (6)	C7—H7A	0.9300
O1—H1A	0.8200	C8—C9	1.385 (5)
N1—C7	1.275 (4)	C8—C13	1.384 (5)
N1—C8	1.411 (4)	C9—C10	1.387 (6)
C2—C1	1.416 (6)	C10—C11	1.377 (6)
C3—C2	1.393 (7)	C10—H10A	0.9300
C3—C4	1.358 (7)	C11—H11A	0.9300
C3—H3A	0.9300	C12—C11	1.354 (6)
C4—H4A	0.9300	C12—H12A	0.9300
C5—C4	1.374 (6)	C13—C12	1.388 (6)
C6—C1	1.388 (5)	C13—H13A	0.9300
C6—C5	1.366 (5)	C14—N2	1.125 (5)
C6—H6A	0.9300	C14—C9	1.449 (7)
C2—O1—H1A	109.5	N1—C7—H7A	118.5
C7—N1—C8	121.2 (3)	C1—C7—H7A	118.5
C2—C1—C7	121.6 (4)	C9—C8—N1	116.0 (3)
C6—C1—C2	119.2 (4)	C9—C8—C13	117.9 (3)
C6—C1—C7	119.2 (4)	C13—C8—N1	126.0 (3)
O1—C2—C1	122.6 (4)	C8—C9—C10	121.7 (4)
O1—C2—C3	120.0 (4)	C8—C9—C14	118.0 (4)
C3—C2—C1	117.4 (4)	C10—C9—C14	120.4 (4)
C2—C3—H3A	118.8	C9—C10—H10A	120.5

C4—C3—C2	122.4 (5)	C11—C10—C9	119.0 (4)
C4—C3—H3A	118.8	C11—C10—H10A	120.5
C3—C4—C5	119.7 (4)	C10—C11—H11A	119.9
C3—C4—H4A	120.2	C12—C11—C10	120.2 (4)
C5—C4—H4A	120.2	C12—C11—H11A	119.9
C4—C5—Br1	120.4 (3)	C11—C12—C13	121.0 (4)
C6—C5—Br1	119.3 (3)	C11—C12—H12A	119.5
C6—C5—C4	120.3 (4)	C13—C12—H12A	119.5
C1—C6—H6A	119.5	C8—C13—C12	120.2 (4)
C5—C6—C1	121.0 (4)	C8—C13—H13A	119.9
C5—C6—H6A	119.5	C12—C13—H13A	119.9
N1—C7—C1	123.1 (3)	N2—C14—C9	179.7 (5)

*Hydrogen-bond geometry (Å, °)*

<i>D</i> —H··· <i>A</i>	<i>D</i> —H	H··· <i>A</i>	<i>D</i> ··· <i>A</i>	<i>D</i> —H··· <i>A</i>
O1—H1A···N1	0.82	1.93	2.651 (4)	146
C7—H7A···N2 <sup>i</sup>	0.93	2.44	3.326 (4)	160

Symmetry codes: (i)  $-x+1/2, y+1, z+1/2$ .

Fig. 1

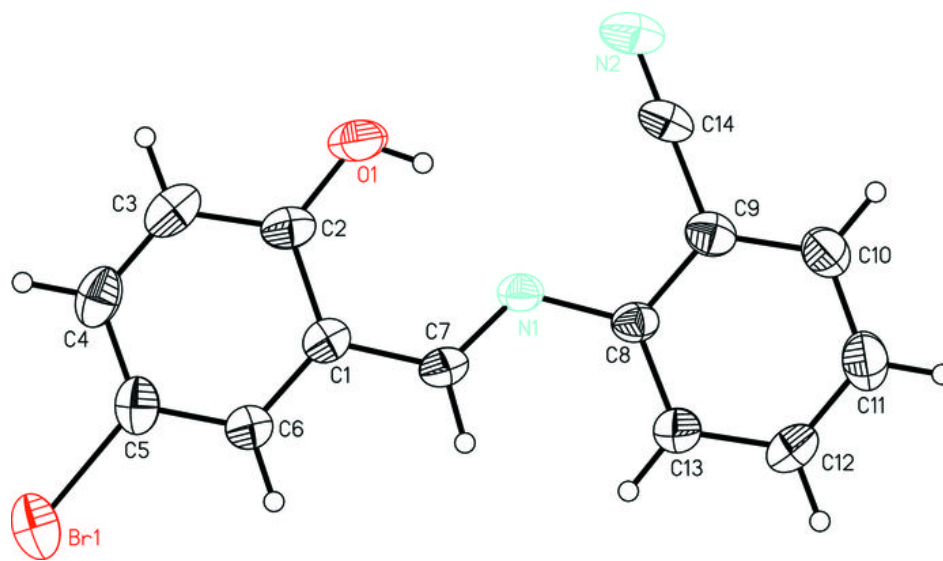




Fig. 2

